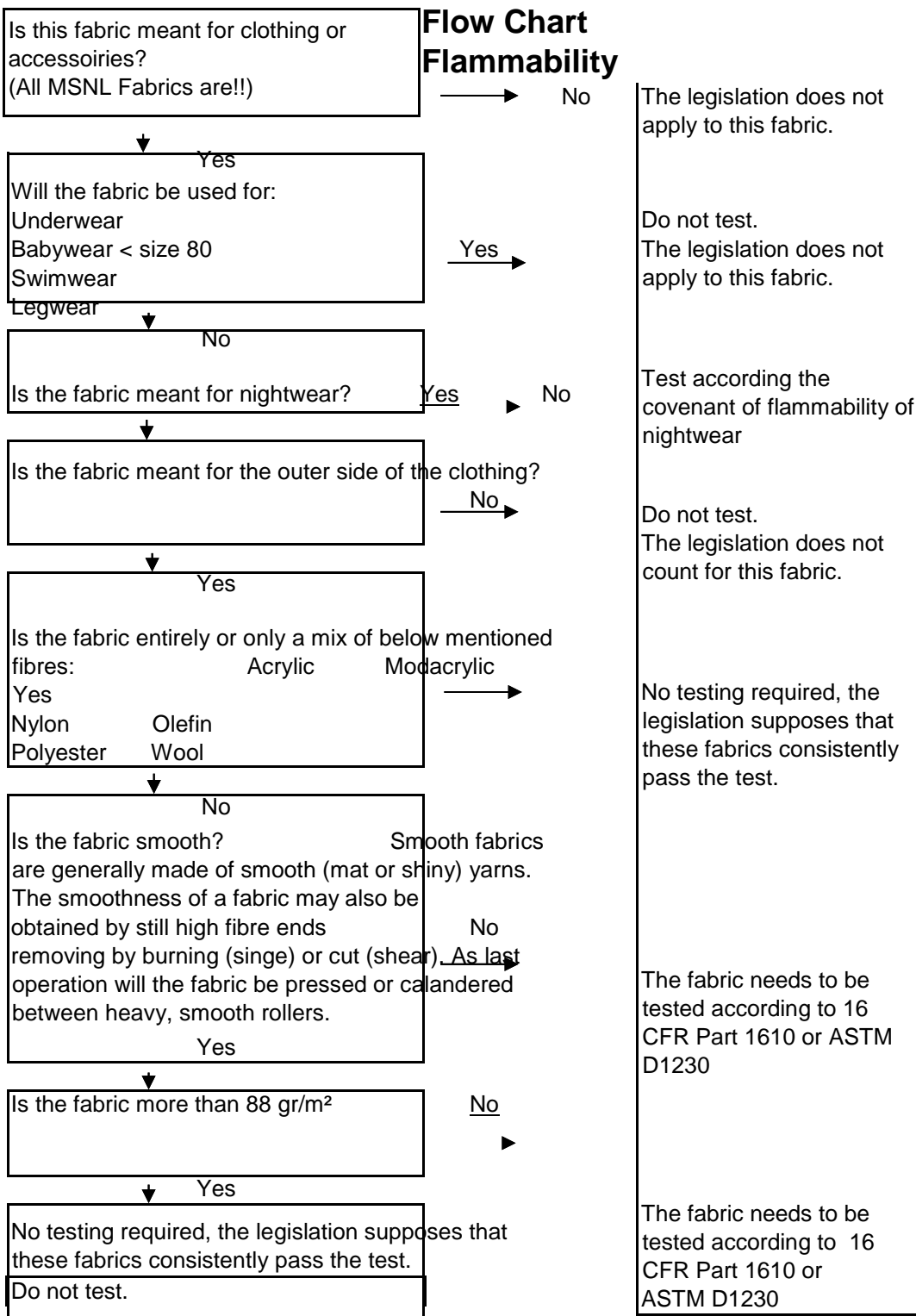


Colourfastness to light	EN-ISO 105 B02	X	X					X	X					
Colourfastness to perspiration	EN-ISO 105 E04	X	X							X	X		X	
Colourfastness to ironing/pressing/steaming	EN-ISO 105 X11	X	X	X	X	X	X	X	X	X	X		X	
Colourfastness to water	EN-ISO 105 E01	X		X		X		X		X	X	X	X	
Waterrepellency	ISO 4920							X	X					
Appearance after washing		X		X		X		X		X	X		X	
Spirality	ISO 16322-3			Only trousers X							X	X		
Appearance after dry cleaning			X		X		X		X				X	
Appearance after professional leather cleaning												X		
* Square metre weight		X	X	X	X	X	X	X	X	X	X		X	
* See Flow chart Flammability														

Flow Chart Flammability



Waterrepellency	ISO 4920													
Appearance after washing														
Spirality	ISO 16322-3													
Appearance after dry cleaning														
Appearance after professional leather cleaning														
* Square metre weight					X						X	X		
* See Flow chart Flammability														

Test to perform Accessories



MATERIAL CHEMICAL	NATURAL OR REGENERATED FIBERS	SYNTHETIC FIBERS	PLASTICS, RUBBERS	COATINGS, PRINTS	LEATHER	ARTIFICIAL LEATHER	METAL	TEST METHOD	LIMIT
ALKYLPHENOLS (AP) AND ALKYPHENOL ETHOXYLATES (APEO)	X	X			X	X		AP: Extraction, GC-MS APEO: Extraction, LC-MS	AP: < 10 mg/kg APEO: < 500 mg/kg
AZO DYES	X	X		X	X	X		Textiles: EN 14362-1: 2012 Leather: EN ISO 17234-1: 2010	< 30 mg/kg
BIOCIDES/ DIMETHYLFUMURATE	X				X			GC-MS ISO/TS 16186: 2012	< 0.1 mg/kg
CHLOROBENZENES AND CHLOROTOLUENES		X						DIN 54232: 2010 GC-MS	< 1 mg/kg (total)
CHLORINATED PARAFFINS SCCP'S					X	X		EN ISO 18219: 2012 (ISO 18219: 2015 implementation date April 2016)	< 1500 mg/kg
CHLORINATED PHENOLS PCP & TECP	X				X			See RSL for detailed description of test method	< 0.5 mg/kg
ALLERGENIC DISPERSE DYES		X						DIN 54231: 2005	< 5 mg/l (= appr. 75 mg/kg)
CARCINOGENIC DYES	X	X			X	X		DIN 54231: 2005	< 5 mg/l (= appr. 75 mg/kg)
FORMALDEHYDE	X	X		X	X	X		Textiles: ISO 14184-1: 2011 Leather: ISO 17226-2: 2008	Skin contact: < 75 mg/kg No skin contact: < 300 mg/kg
CHROMIUM VI					X			ISO 17075: 2008 Aging	< 3 mg/kg



HEAVY METALS TOTAL CONTENT LEAD & CADMIUM			X	X		X	X	Cadmium: EN 1122: 2001 and Acid digestion, AAS/ICP analysis Lead: Acid digestion, AAS/ICP analysis	Cadmium: < 100 mg/kg Lead: < 90 mg/kg
NICKEL RELEASE							X	EN 1811-2011 + A1: 2015 nickel release EN 12472: 2005 + A1: 2009 coated materials	Body piercings ≤ 0.35 µg/cm ² /week Consumer goods ≤ 0.88 µg/cm ² /week
ORGANOTIN COMPOUNDS			X	X		X		ISO 17353: 2005 followed by GC-MS analysis	< 1000 mg/kg
PERFLUORINATED CHEMICALS PFOS & PFOA		X/padding		X/water repellent				Solvent extraction, LC-MS CEN/TS 15968: 2010	≤ 1µg / m ²
PHTHALATES			X	X		X		Printed or coated textiles: ISO 14389: 2014 Plastics: EN 14372: 2004	< 1000 mg/kg
POLYCYCLIC AROMATIC HYDROCARBONS (PAH)			X	X		X		AfPS GS 2014:01 PAH	< 1 mg/kg
PVC			X	X		X		Beilstein test	n.d.
SOLVENTS/ DIMETHYLFORMAMIDE				X/PU coated				Head space GC-MS	< 1000 mg/kg

TEST REPORT REQUIRED

RANDOM TEST

NATURAL FIBERS OR BLENDS WITH NATURAL FIBERS SUCH AS: COTTON, LINEN OR FLAX, WOOL, SILK, HEMP
 REGENERATED FIBERS OR BLENDS WITH REGENERATED FIBERS SUCH AS: VISCOSE, LYOCCELL, MODAL, CUPRO, ACETATE
 SYNTHETIC FIBERS OR BLENDS WITH SYNTHETIC FIBERS SUCH AS: POLYESTER, NYLON, ACRYLIC, ELASTHANE, MODACRYLIC, POLYURETHANE